



POWDER FLASK

canyon v5a3IV ★★ ★

Location

[Haast Pass](#)

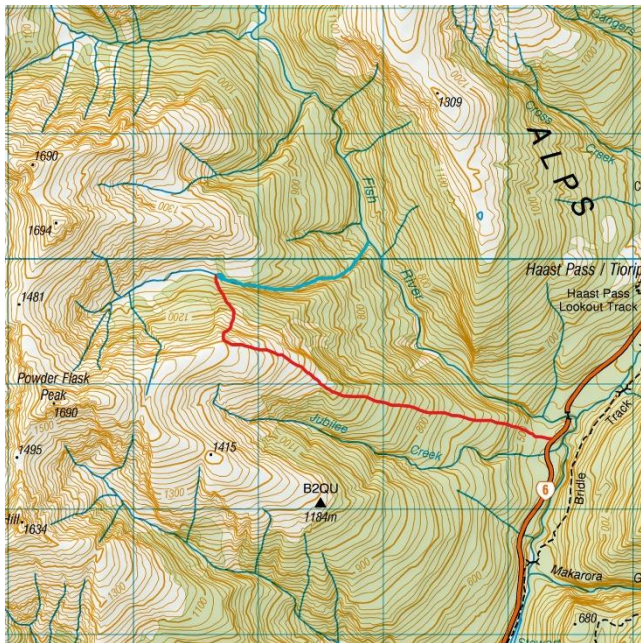
Character

Open alpine start, closes up towards the end. Jumps with deep pools and a few 30m+ waterfalls/rappels.

Low water levels, but this canyon is usually followed by Fish River Canyon, which has very high water levels and dangerous water features.

Map

Topo50 sheet number: **BZ13 - Haast Pass / Tioripatea**



Approach by Car

Drive to Haast pass on Highway 6. 1.3km south of Haast pass park in a gravel clearing immediately south of Jubilee Creek.

(The sign on the culvert says "Canaan's Creek" but it is the same creek as the one marked Jubilee Creek on the map)

Approach on Foot

Walk 50 meters along the road towards Fish creek, then head into the beech forest. Climb the spur between Jubilee Creek and Fish river. At the 1000m contour you have to bush bash a little bit until you reach the tussock line. Continue up to 1400m, then drop down on the N/E side between some small bluffs. When you hit the forest

continue north and you will end up in the flat section of creek bed just before the start of the canyon.

Rock

Schist

Water

The canyon has a few pools where you can jump, the rest of the pools are ankle deep. Generally low flows.

Catchment

2.6 km² (Watch for snowmelt in the early summer)

Anchors

Natural anchors and sparse bolting. Bolts and trees in good condition as of March 2022.

Gear

60m x2 ropes.

Route Description

The canyon starts with two small jumps. Then a bigger jump (R1) and an abseil from a sling in the rock (R2). After that there is some down climbing for 400 meters.

From here the canyon gets a bit more slotted and the abseils follow each other quickly. The last abseil will end on the wide riverbed of the Fish River. From here most parties will continue down Fish River canyon (v4a5IV**).

Time

Vehicle park to start of canyon	3hr 30min
Canyon descent	2hr30min
Return to vehicle via Fish River	3h
Total	9h

Flash Flood Danger

Low. There are a lot of spots in the canyon where you can get a few meters above the stream.

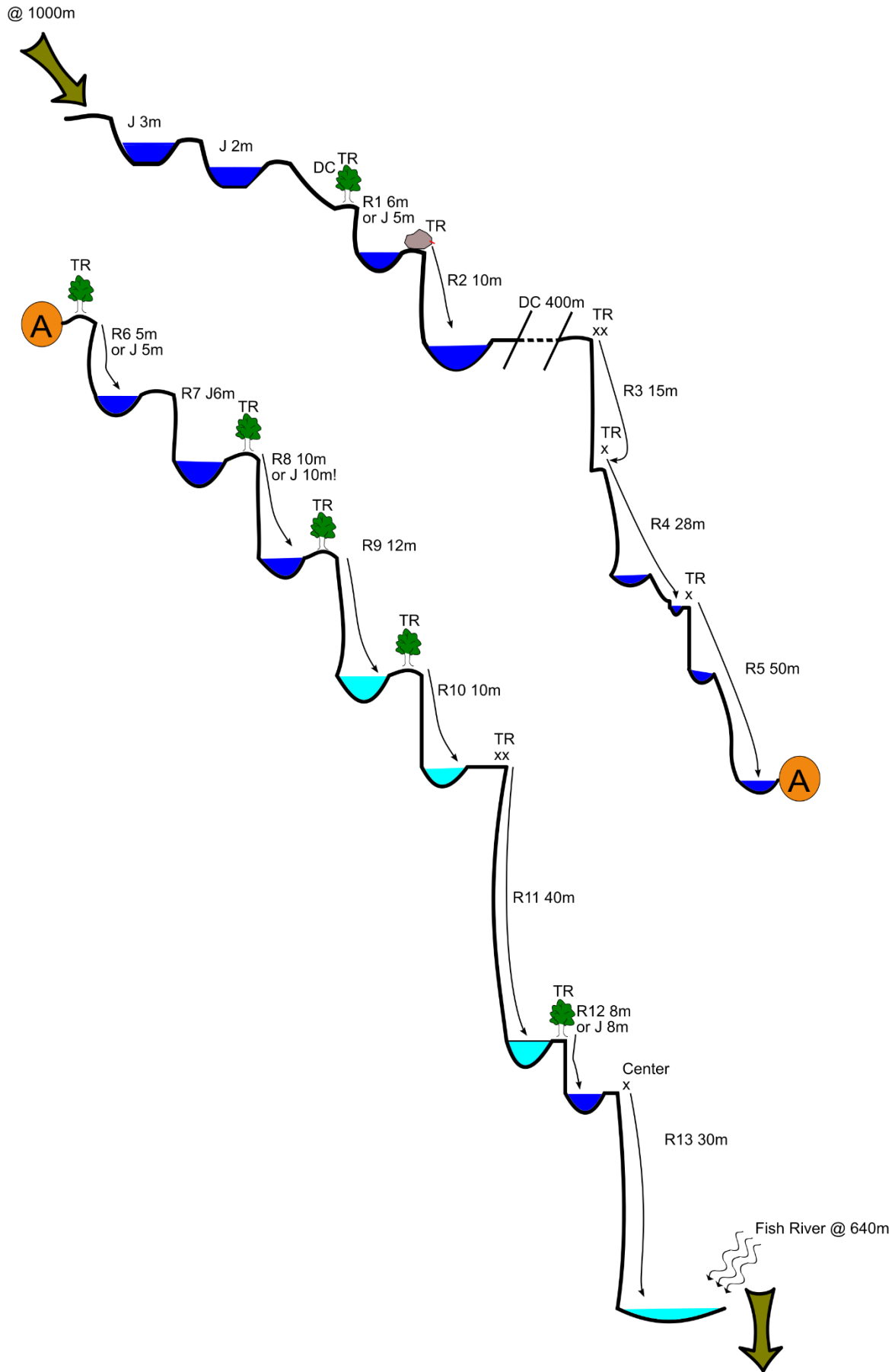
Escapes

Unknown. No escapes were tested during the known descents.

Notes

First descent: Alain Rohr, Jethro Robinson, Annette Philipps, Richard Tribe, Mike Illingworth 22 Feb 2015

Fun to effort ratio: 2 to 1

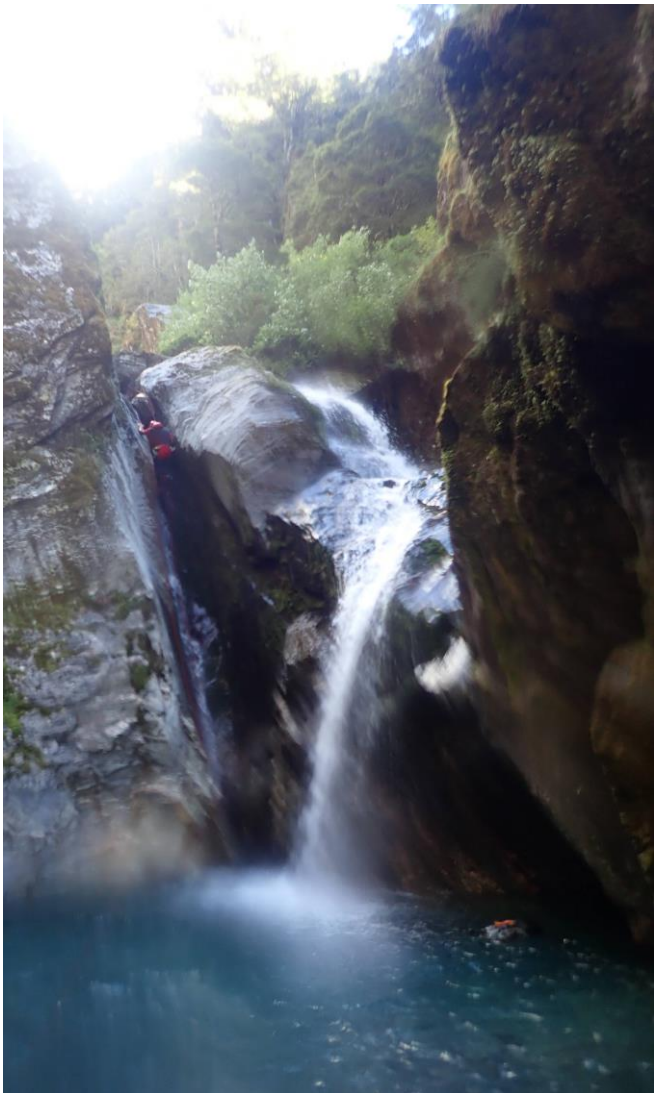
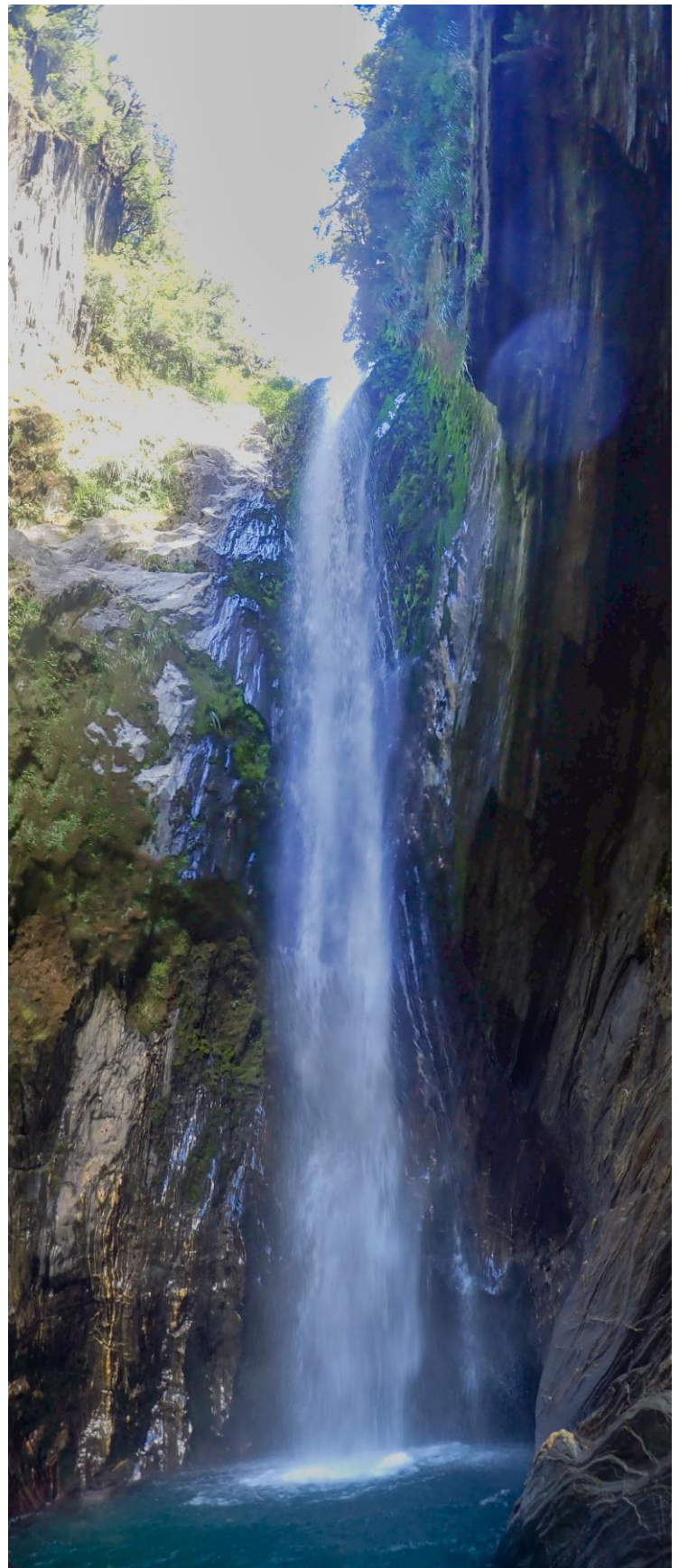


POWDER FLASK CANYON

Canyon v5a3IV ★★ ★

Topo by Erwan Coq with
 edits by Dan Clearwater
 March 2022

www.kiwicanyons.org



POWDER FLASK CANYON

Canyon v5a3IV ★★ ★

*Topo by Erwan Coq with
edits by Dan Clearwater
March 2022*

www.kiwicanyons.org

Page 3