

Doughboy

V5 A4 IV ★★

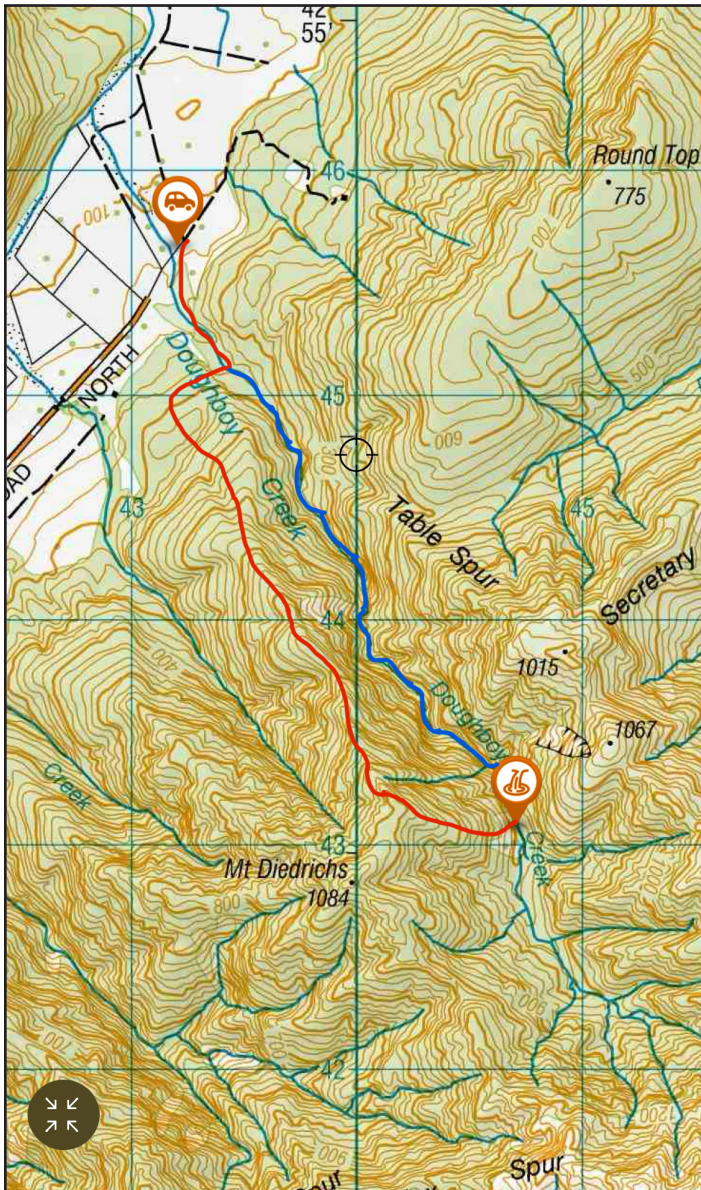
Location

[Doughboy Creek 30 km SSE from Hokitika](#)

Character

Long high flow canyon with 15 abseils. No dangerous hydraulics in normal flows.

Quite open canyon with some enclosed sections. The canyon is beautiful in lots of places. No big challenges in normal flow. 2,5 stars;) [PICTURES](#) of the first decent.



Map

BV18 & BV 19

Approach by car

To reach the starting point, head in the direction of Hokitika Gorge and locate '[Doughboy Road North](#)'. Follow this gravel road until it finished and you'll hit Doughboy Creek. Ford the creek and proceed to park your vehicle approximately 30 meters further on the grassy area.

Approach on foot

From the car, walk upstream for 400 meters, find the pink flagging tape (TL) and head into the bush on the TL. Bush-bash until you hit a paddock, and you will find an old 4wd track that takes you up for a couple of hundred meters. Then head back into the bush following the spur and pink flagging tape until the 1000 meter contour. From here the alpine scrub is bad, and you have to find your way down the spur that will bring you to the river. If you're lucky, you will find a track that is not on the map but has blue and pink flagging tape.

Rock

Bedrock Schist.



Pepijn drilling deviation - R15

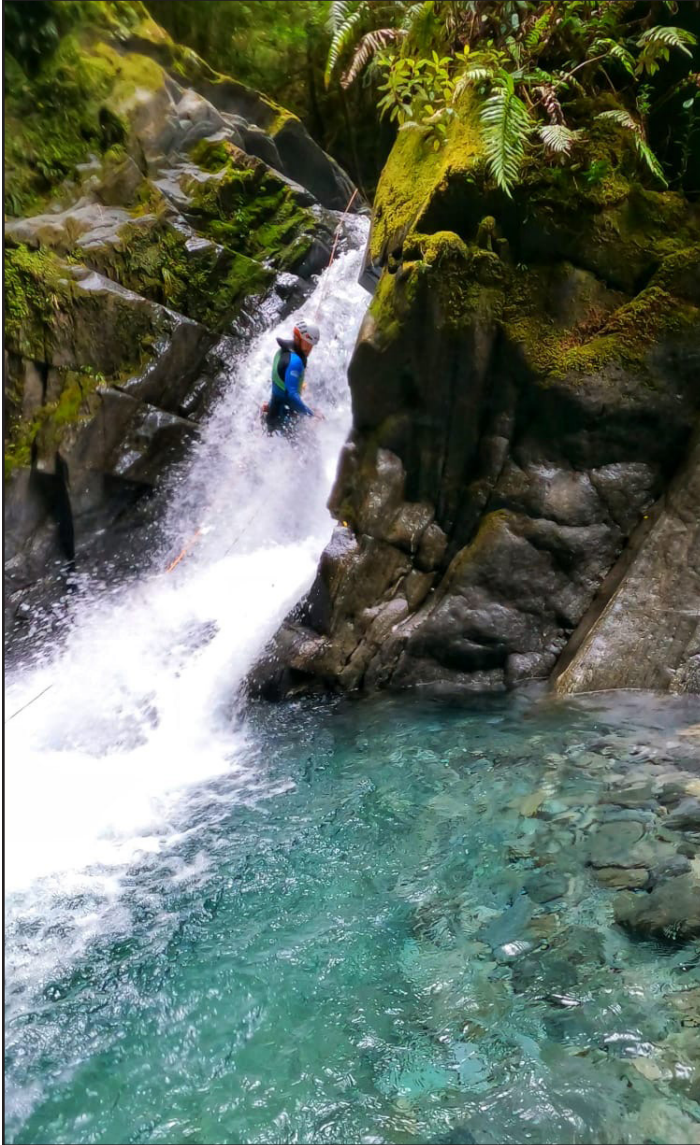
Doughboy V5 A4 IV **

Water

High flow canyon, given its enclosed nature in some spots. But generally you can avoid the flow. Sensitive to flash flood when raining, water-levels can become dangerous quickly when rain hits the coast!

Catchment

3.5 km²



Anchors

4 Single bolted anchor. Sling on rocks, some trees have slings some trees don't and can be pulled back easy. Bring a bolting kit as some trees can be gone and some abseils need a bolt.

Gear

Minimum **2 x 40m** ropes. Spares recommended. To complete the rigging in the canyon there are **5 more double bolted Anchors** are needed. (See red dots in topo). Some trees are small and need maybe replacements with some bolts in the future. Bolts used: M10 316 stainless steel

Route Description

@700 meters you start with a tricky down climb. After a few smaller down climbs you will reach the first bolted rappel (R1). R2 has a tree that can be reached by climbing up 3 meters, a small rock face. R3 is rappelled of a sling wrapped around a small pointy rock, treat it carefully to not whip off! After R4 you can down climb 15 meters on the TR. R5 & R6 are not bolted yet these are two beautiful waterfalls that can be done! For the first decent, we chicken-ran on the TR through a slip. From R7 till R14 you can use mostly trees without slings. You will find one bolt on R8. R14 and R15 is the crux section. R14 is rigged off a big log. (This log could wash out on a big flood event, so that is why there could be an option to place an anchor here.) From the log you abseil to a single bolted hanging re-belay R15. From here you can abseil via a deviation with a carabiner. This waterfall is pretty amazing and the best and most technical part of the canyon

After R15 There are a couple of small down climbs and two (R16 & R17) rappel from trees. Follow the creek and find your last waterfall R18. This one can be done from a tree (TR) in the flow or from a tree higher out the flow. If your rope gets stuck you can easy climb back around to retrieve it. It would be optimal to put an anchor in the TL rock (see red dot).

Time

Vehicle park to start of canyon 4h
Canyon descent 5h
Return to vehicle 0.5h
Total 9.5h

Flash flood danger

Medium. Few places to get above flood levels. But when it rains river levels could rise quickly, its the west coast so only go when it is good weather fore-casted.

Escape

There are a lot of spots where you could avoid a flash flood. On some slips you could try to get back on the spur alto this is not tested and seemed pretty hard and slippery because of the steep walls.

Notes

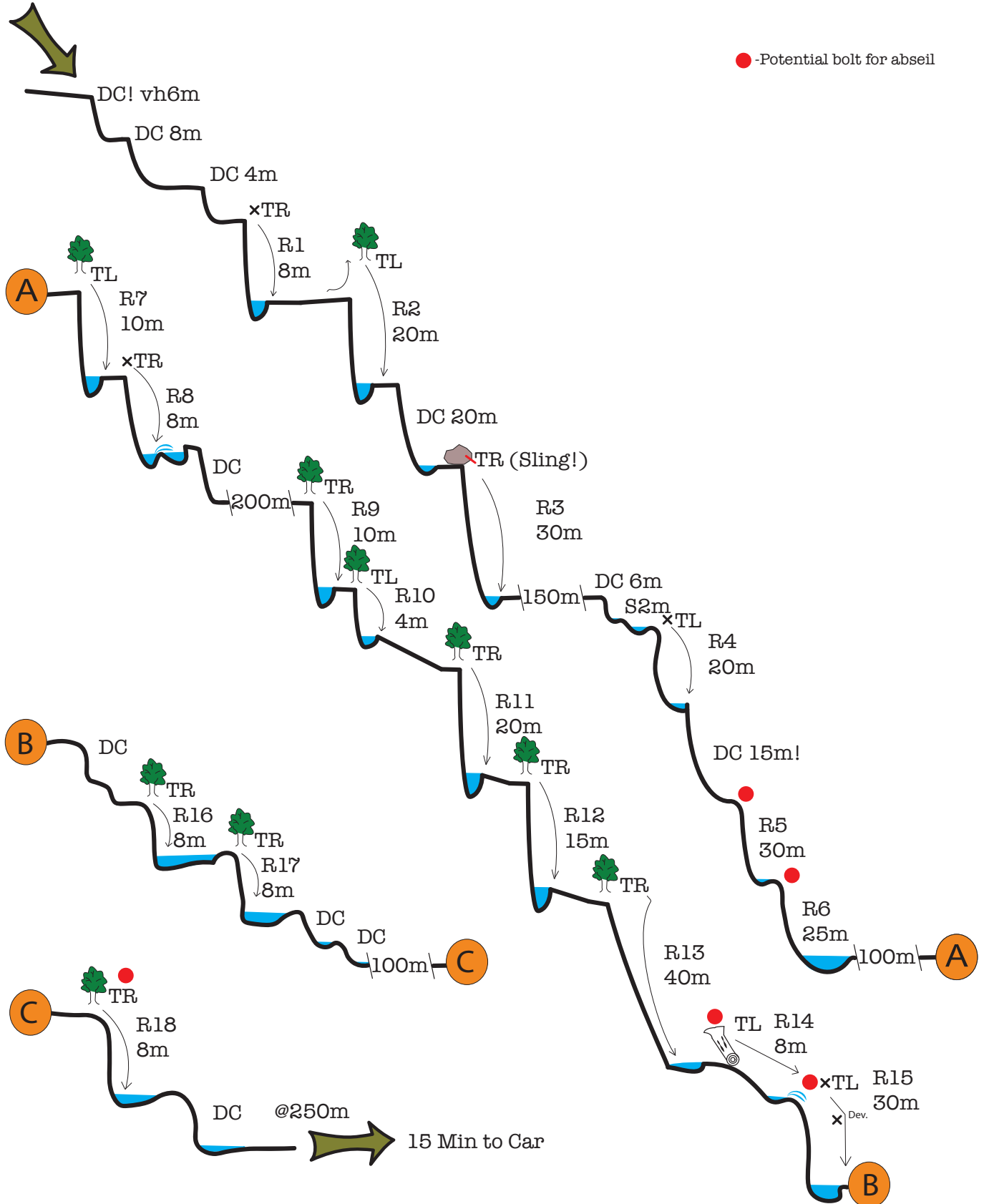
First descent: Pepijn Hoeksema & Erwan Coq
Feb 2024.

Doughboy V5 A4 IV **

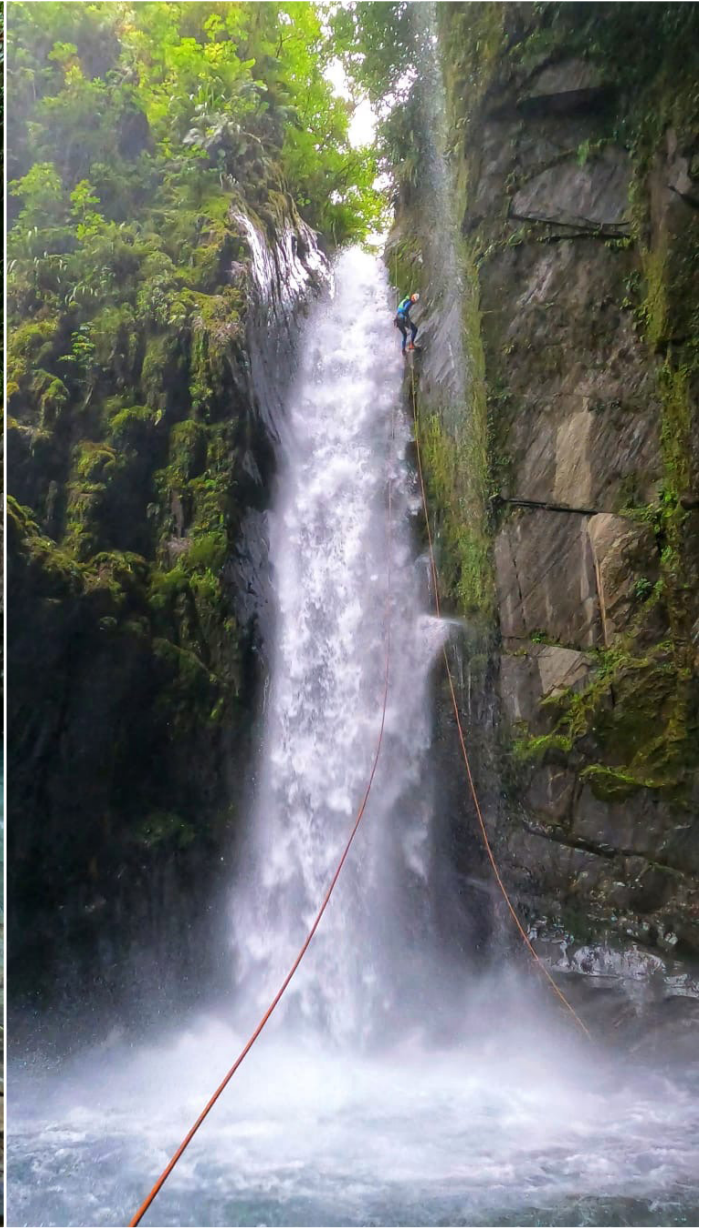
DOUGHBOY V5 A4 IV **

@700m TL

● -Potential bolt for abseil



Doughboy V5 A4 IV **



Doughboy V5 A4 IV **