



GOAT CREEK

Canyon v3a2IV ★

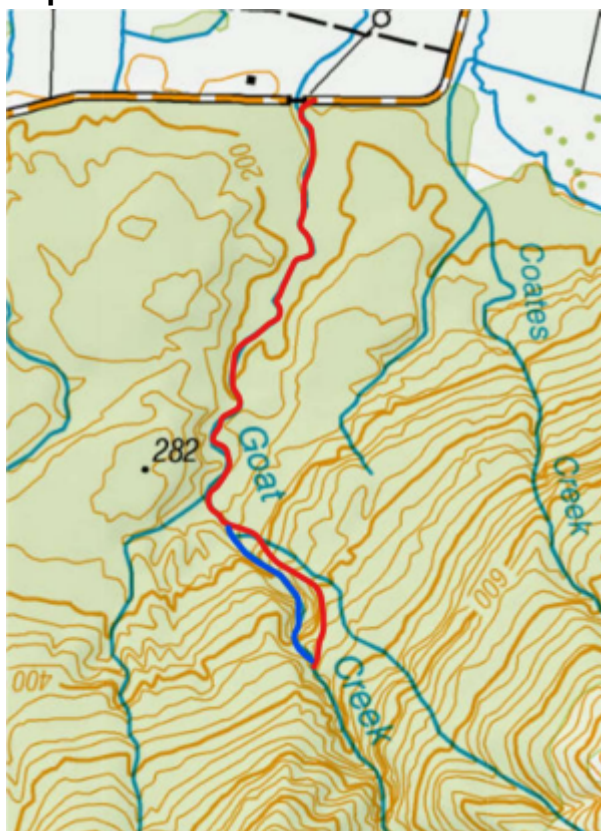
Location

Haupiri (inland from Greymouth).

Character

Adventure canyon with some good pitches, not many swims.

Map



Approach/return in red, canyon in blue.

Approach by Car

Drive towards Haupiri, from Greymouth or Moana, by a long partly gravel road. Park where the road crosses the creek. Note this is often a surprisingly busy road so park carefully out of the way.

Approach on Foot

Follow Goat Creek upstream until it starts to become enclosed. If you reach an impressive low flow waterfall on the TR then you've come slightly too far. Go into the bush on the TR and follow the spur uphill, there should be a big drop off close on the right. Where the terrain flattens off traverse above the drop off and continue slightly uphill. There should be a final steep downhill to reach the creek at roughly the 460m contour. There is at least one

wasp nest to pass on the traverse above the drop off, so prepare for some stings.

Rock

Schist, in places crumbly but mostly good.

Water

Low flow, few swims.

Catchment

2.1 km²

Anchors

Natural anchors and single bolts.

Gear

At least one 60m rope, natural anchor rigging gear.

Route Description

Abseils and downclimbs in a mostly enclosed canyon, although open in places. The bedrock gorge is shallow but there are very deep vegetated walls above.

There are about 7 good major drops, all 15-25m, and numerous smaller features that may be downclimbed or might require a rope. There are quite a few logjams to climb over and the narrower pitches have big false floors at the top. If the false floor on the final pitch moves the bolt anchor may be hard to access.

Time

Vehicle park to end of canyon	45min
End of canyon to start of canyon	1h30min
Canyon descent	~2-3h
Return to vehicle	45min
Total	5-6h

Flash Flood Danger

Medium

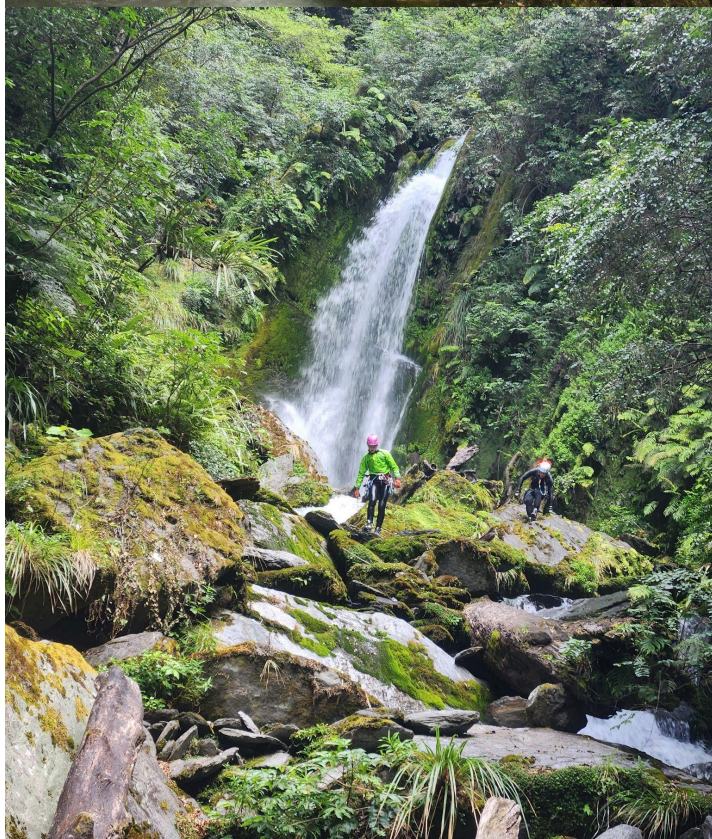
Escapes

Exit into the bush may be possible, but there are very steep slopes above (in places >50m deep).

Notes

First descent: Sach Knight, Anya Bukholt-payne, Conor Handley, Sean Szymanski, Amy Burney, Christian Miller.

Public access. The contours above look promising – maybe there is an upper section?



GOAT CREEK

Canyon v3a2IV ★

Topo by Christian Miller
www.kiwicanyons.org