

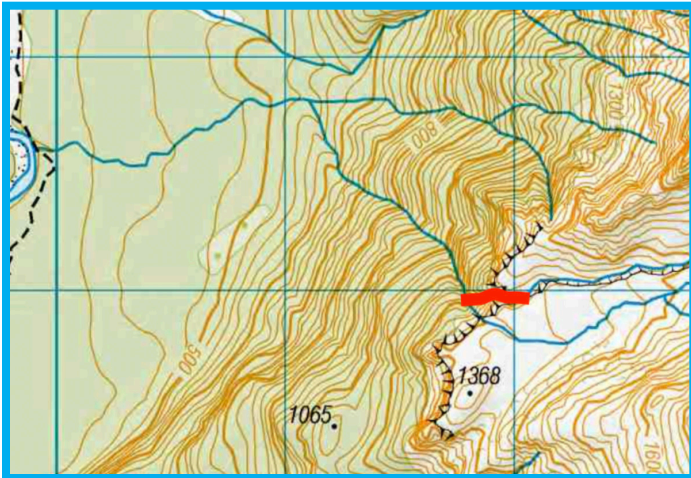


# EAGLES NEST ALTERNATIVE ENTRANCE

Canyon v4a3V ★★★

**Location**  
Dart Valley

**Character**  
The character is the same as the classic Eagles Nest. No added difficulties are encountered in this alternative entrance route.



**Map**  
CA10 - Lake Williamson

**Approach by Car**  
Same as for Eagles Nest

**Approach on Foot**  
Follow the normal approach route for Eagles Nest. At the entrance of Eagles Nest, continue North for approximately 5 minutes until you reach a much bigger stream. Find your way down the 30 meter steep sloped bank. This is the start of the alternative entrance.

**Entrance**  
44° 37.60' S 168° 21.79' E

**Rock**  
Schist

**Water**  
Same as for Eagles Nest. First descent was done during

dry conditions.  
**Catchment**  
4.6 km<sup>2</sup>

**Anchors**  
Exploratory rigging!  
Most descents are equipped with (single) 10 mm stainless steel 306 expansion bolts and [Tebylon](#) Hangers. Trees are rigged with 5 mm Dyneema (HMPE) or webbing and a [Tebylon half ring](#). Some 10 mm holes were drilled for temporary bolts.

**Gear**  
No extra gear is required for the alternative entrance. 2 x 60 m ropes advised.

**Route Description**  
The canyon starts with a couple of small rappels in an open setting until a bigger 35 m high waterfall is reached. Care should be taken as there is a sharp edge approximately 5 m below the anchor. A few more rappels and you join the classic Eagles Nest route around the 8th rappel.

<b>Time</b>	
Vehicle park to start of canyon	5 h
Canyon descent (till Eagles Nest)	1 h
Rest of Eagles Nest	6 h
Return to vehicle	2 h
<b>Total</b>	<b>14 h</b>

**Flash Flood Danger**  
The alternative entrance route is relatively open when compared to the lower parts of Eagles Nest. However as you have to do the rest of Eagles Nest, descents should only be done during settled weather.

**Escapes**  
The canyon is relatively open for the first three rappels where it is possible to exit the canyon. It closes in after the fourth rappel.

## Notes

First descent:

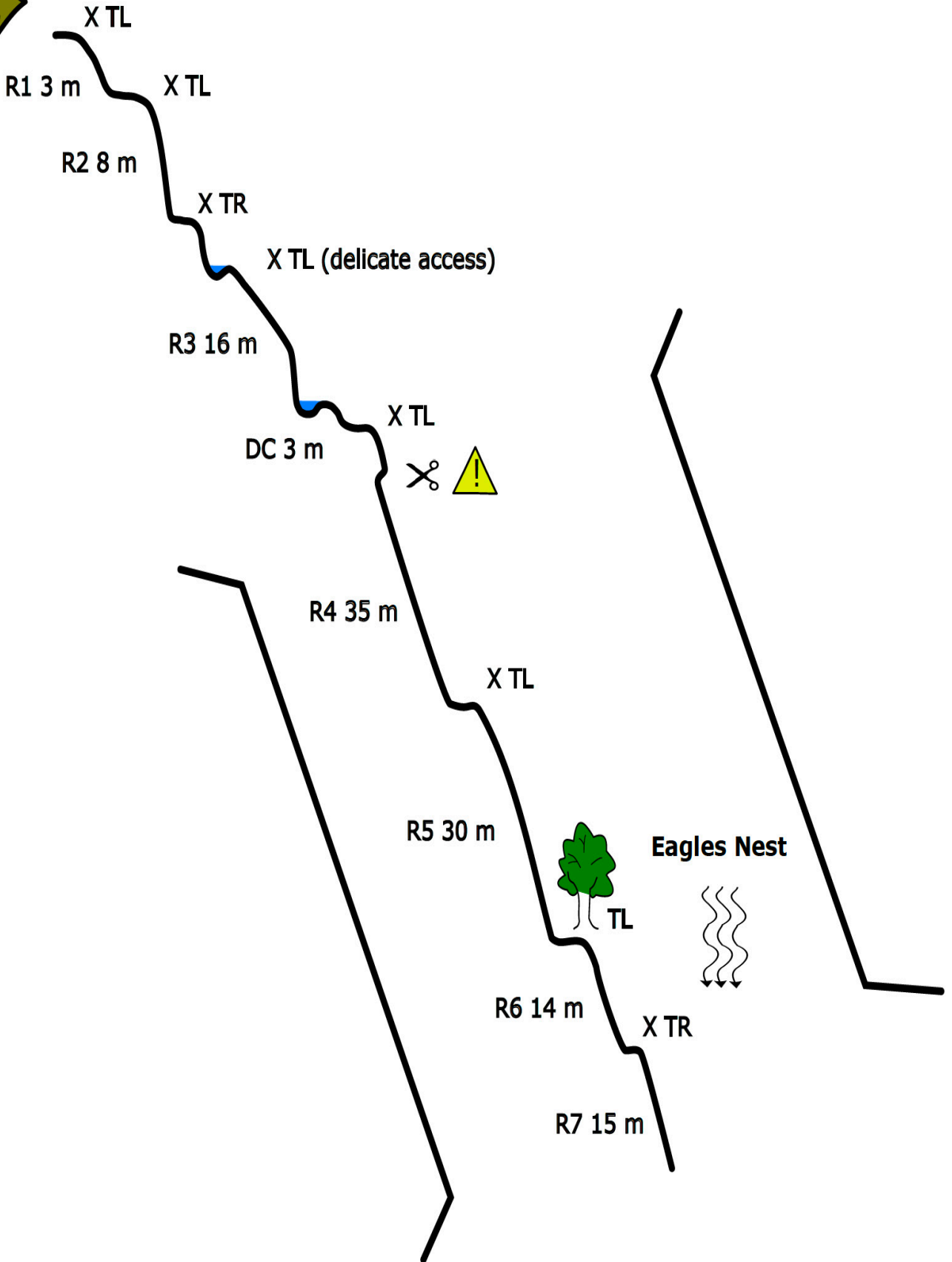
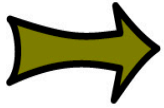
[Dutch Canyoning Expedition](#) - Erik Birkhoff, Erwan Coq, Pepijn Hoeksema, Bas Hetterscheid, Britt Joosten, Jaap Sikkema, Bram de Vries, Loys van Asten

02-03-2025

The alternative entrance follows what is actually the main stream of Eagles Nest canyon. It offers an alternative, and more scenic, route into the main canyon. It joins the classic route around the 8th rappel.



**Entrance**





**Between R4 and R5**

EXPEDITION  
2025



GUARA



ROPE ACCESS NOORD

radix

